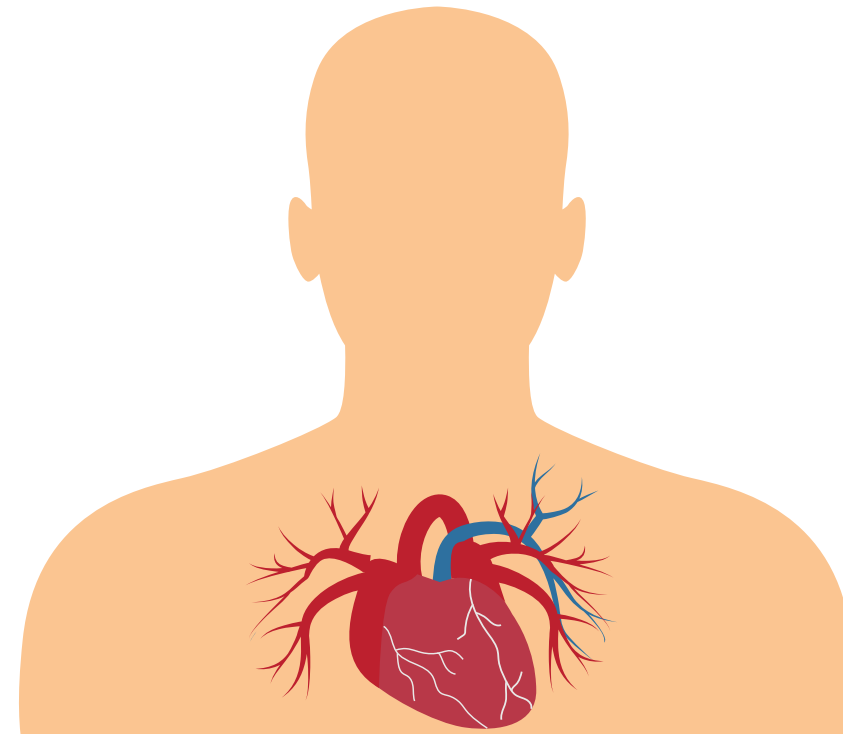


# Complete Higher Risk Indicated Percutaneous Intervention (CHIP)

## The Problem

Coronary artery disease (CAD) is usually treated by **PCI or CABG**, but these procedures may be complicated for certain high risk patients.

Such patients are medically managed.



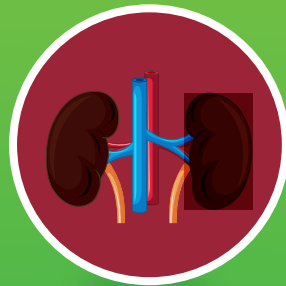
## The Solution

For such high risk patients, **Aster Prime's cardiologists** have started the **CHIP program**.

## Who require CHIP angioplasty?



Advanced age



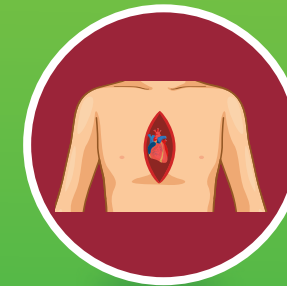
History of disease including kidney disease, stroke or diabetes



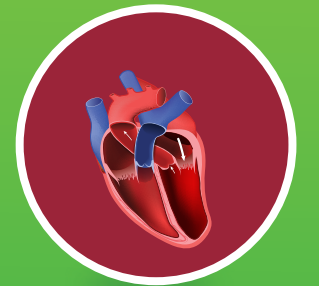
Location of CAD including left main or bifurcated disease



Chronic total occlusion (CTO) of the coronary arteries



Previous open-heart surgery



Advanced heart failure

## Patient presentation:



Worsening chest comfort



Fatigue

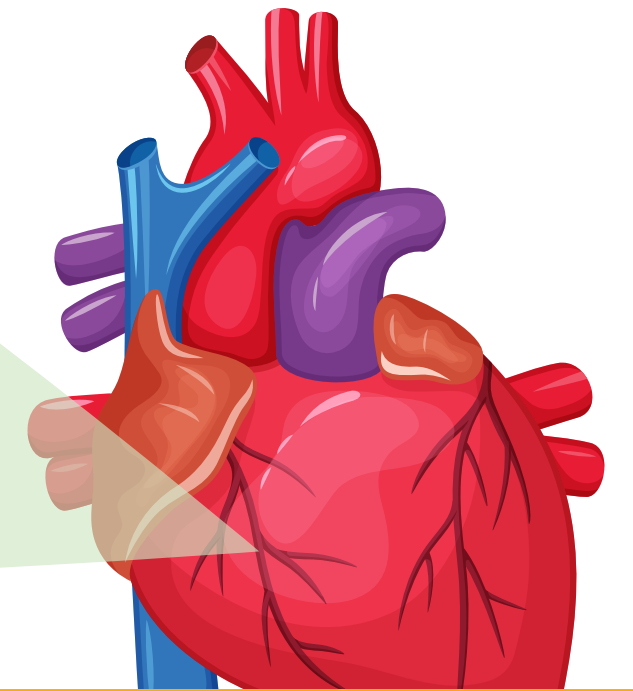
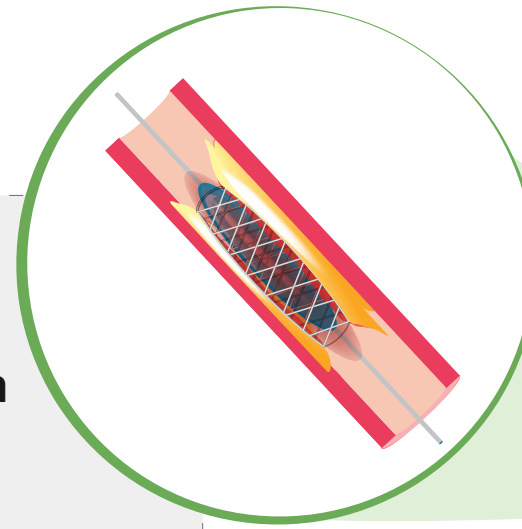


Shortness of breathe

Such patients are considered high risk by both cardiac surgeon and cardiologist and thus treated with medications.

## Aster Prime's advanced CHIP angioplasty techniques

- Rotational atherectomy
- Specialized antegrade and retrograde chronic total occlusion (CTO) approaches
- Complex bifurcation stenting



## Benefits of CHIP techniques



Improved symptoms



Improved quality of life



Less re-admission rate

## Aster Prime's Protected PCI in CHIP program

- ✓ Patients with advanced heart failure and/or severe heart valve disease are very vulnerable during the CHIP procedure due to weakened heart muscles
- ✓ Aster Prime Hospital offer catheter based devices, like IABP, to be used during CHIP to provide temporary support to the heart.

## Contact Us

### Address

**Aster  
PRIME HOSPITAL**  
We'll Treat You Well



Aster Prime Hospital, Plot 2 Mytri Vihar,  
Ameerpet, Near Ameerpet Metro Station,  
Hyderabad 500016

### Call

- OPD appointments: 040 4959 4959 / +91 95424 75650
- Cardiac ICU (Emergencies): 040 4456 9955
- Cath Lab (Cath lab listing of cases): 040 4456 9959
- Hospital phone: +91 40 4456 9999

### Email

 [raghu@draghu.com](mailto:raghu@draghu.com)